

4E1-4Eth Interface Converter



This converter provides conversion from 1 to 4 E1 channels to 4 Ethernet interface with built-in switch. Support 1 to 4 E1 channels setting, it can detect the number of E1 channel and select available channel. It can reach 7.936 Mbps bandwidth when 4 E1 channels work simultaneity. Transmit Ethernet signal (RJ45) via point-to-point to remote RJ45 interface, realize connection between E1 channel and Ethernet, and compose bridge. Can satisfy real-time video, audio, and data transmit.

PRODUCT CHARACTER:

- (1) Based on self-copyright IC.
- (2) 4 Ethernet transmit transparent through 1-4 E1 channels with built-in switch.
- (3) Ethernet interface 10M/100M, full/half duplex configure by dip switch or self-negotiation,.
- (4) support AUTO-MDX/MDIX, straight and crossover auto-adapt.
- (5) E1 interface according with ITU-T G.703,G.704,and G.823, not support the use of signaling time slot.
- (6)E1 interface have built-in clock resume circuit and HDB3 codec circuit.
- (7) Local loopback supported.
- (8)Support 1-4E1 channel hot plug, and auto detection available E1 channels for distributed bandwidth.
- (9)Support flexible setting of 1 to 4 E1 channels, auto detect the number of E1 channels and

time-delay, select available E1 channels when reset.

(10) Support reset remote system from local system.

(11) Have Ethernet monitor self-reset function, device will not dead.

(12) 75 Ohm or 120 Ohm E1 optional. Both AC and DC power input.

(13) Built-in CRC error code threshold of 1×10^{-6} for each E1 line. The system will automatically switch off and isolate an E1 line if the error code rate of the line exceeds the configured threshold.

(14) LOS and CRC alarm limitation can auto insulate bad quality transmit channels by configuration, and is single direction insulation. When one direction error rate over limitation, cut only this direction, the other direction not affected. (the two directions need not symmetry).

(15) LED indicators: Power, E1 to E4 LOS (Loss of signal), FL (Frame Loss), Ethernet 1 to 4 Link, Ethernet speed (SPD).

TECHNICAL SPECIFICATION:

4xE1 interface:

Interface standard: according to G.703

Interface Rate: 2.048Mbps±50ppm

Jitter tolerance: according to G.742 and G.823.

Transmission capability: 4*E1

Clock mode: inter-clock, line-clock

Connector: BNC (75Ω)、RJ48 (120Ω)

E1 Impedance: 75Ω(unbalance), 120Ω(balance).

4x10/100 Base-T interface:

Data Rate: 10/100Mbps (auto-negotiation supported)

Standard: Compatible with IEEE802.3

Connector: RJ-45, 4 Ethernet ports

Full/Half duplex

Working environment:

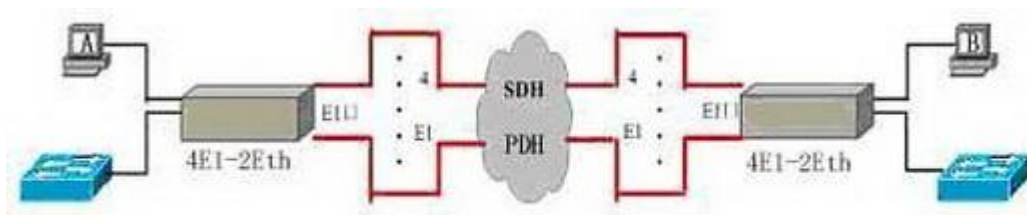
power supply: AC220V and DC -48V (both in the same chassis)

power consumption: $\leq 7W$

working temperature: $-5^{\circ}C \sim 50^{\circ}C$

storage temperature: $-40^{\circ}C \sim +70^{\circ}C$

humidity: 10 ~95 %

Typical Application:

Winyuan Technology Co., Ltd
(Zhejiang ZEC Trade & Industry Co., Ltd)

Head Office

8th Floor, Red Stone Busines Building, 218 Chaowang Road, Hangzhou, China

PostCode: 310012