



8E1/T1 over Ethernet Multiplexer, 8E1 TDM over IP



Spot-light:

8 x E1 G.703 TDM over IP | E1 over IP | E1 over Ethernet converter |, for building a high capacity legacy E1 leased lines over IP networks, Web Manager & with cascading function for capacity increasing.

Description:

As a cost effective solution for the traditional telecom services migrate to the IP packet networking technology, **EthMux V8** adopts the innovative TDM over IP technology, it transports the legacy E1 data through the existing IP network.

EthMux V8 is the new generation of the TDM over IP equipment with IP circuit emulation that supports transportation of 8 E1 and two local Ethernet ports over the IP network. The uplink port and user data ports are IEEE 802.3 compliant, 10/100BaseT auto-sensed Ethernet ports.

The state-of-the-art design provides the highest availability with the accurate timing signal and data bit stream reconstruction. Predefined system parameter profiles that according to different application requirements ultimately simplify the installation process and saving the maintenance cost.

Telecom and Enterprise users can save a lot of access and equipment costs and generates new revenue by offering different types of service over existing Ethernet networks. It is also suitable for connecting to the wireless equipment to achieve fast deployment of E1 services. One particular application is to build E1 links with low cost Wireless LAN bridges, replacing much more costly microwave radios. Operators can use **EthMux V8** to provide legacy TDM services over wired or wireless packet network.

The heart of **EthMux V8** is the TDM/Packet processing unit. It truncates E1/T1 data stream, putting the data into Ethernet packet with or without IP headers. The packets are passed to the Ethernet switch unit via MII interface, and are sent out adaptive the uplink ports. Ethernet data from two local data port are also sent out through the uplink ports, but with lower priority than those packets containing E1/T1 data.

Status

[Equipment Status](#)

[Line Status](#)

[Alarm Log](#)

Line Test

[Line Loopback](#)

Configuration

[Line Management](#)

[Vlan Management](#)

[Eth Port Status](#)

[SNMP Configuration](#)

Configuration Information I

Attribute	Value
Line Type	E1
Encapsulation Level	2
Use IP Encapsulation	Yes
Uplink <input type="text" value="Bandwidth"/>	30000 Kbps (0~100000)

Configuration Information II

Port	Enable	Destination IP	Timing Mode	Jitter Buffer	From Remote Port
1	<input checked="" type="checkbox"/>	192.168.1.3	Adaptive	16 ms	1
2	<input checked="" type="checkbox"/>	192.168.1.3	Adaptive	16 ms	2
3	<input checked="" type="checkbox"/>	192.168.1.3	Adaptive	16 ms	3
4	<input checked="" type="checkbox"/>	192.168.1.3	Adaptive	16 ms	4

Features:

- User-friendly Web server supported for easy setup and maintenance
- Support both WEB server and SNMP network management
- Point to point and point to multipoint supported
- Uplink ports 1+1 backup supported
- Eight E1 Ports and 2 local Ethernet ports supported
- Stable E1 clock recovery, low jitter and wander
- Low processing delay for E1 channels, high bandwidth usage efficiency
- Resist to packet loss, with PCM frame synchronization protection
- User definable encapsulation packet size for different application
- Support Ethernet encapsulation and UDP/IP protocol encapsulation
- Support VLAN settings for E1 service and in band VLAN management.
- Enough jitter buffer to resist packet delay variation (PDV)
- Local Ethernet port throughput limiting, assuring E1 QoS
- Local and remote E1 LOS and AIS and packet loss indication for trouble-shooting and maintenance
- Support cascade concatenate for more than 8 E1 ports

Specifications:

Capacity

It supports 8 E1 ports, two 10/100Base-Tx uplink Ethernet ports and two 10/100Base-Tx local data Ethernet ports.

E1 interface

Comply with ITU-T G.703 recommendation

Four E1 Ports Supported. E1 port impedance E1-120Ω for twisted pair cables or 75Ω for coax (The RJ45 E1-120Ω are default for ports)

End-to-end delay (minimum delay setting) ≤ 10ms

Output frequency offset (adaptive timing, stabilized) ≤ 5 ppm

Output jitter (adaptive timing) ≤ 0.1UI

10/100Base-Tx port

Comply with IEEE 802.3

10M/100M Adaptive, Half/Full Duplex Adaptive

Support 802.1Q MAC

Uplink ports 1+1 backup supported

Two user data ports supported. And Web manager supported through anyone of two user data ports.

Power

AC: 100V~240V/50Hz (fuse: 1A)

DC: -38V ~ -62V (optional)

Power Consumption: ≤ 10W

Operating condition

Temperature: (0~50) °C

Humidity: ≤ 90% (non-condensing)

Dimensions

Width × Height × Depth: 440 × 44 × 231 mm

Weight

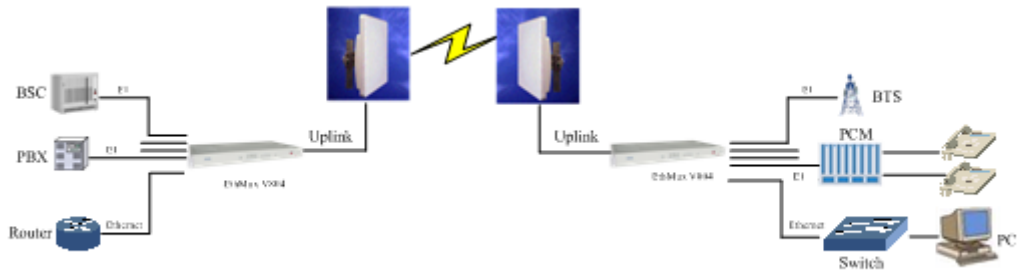
≤ 2.5 kg

Ordering Information:

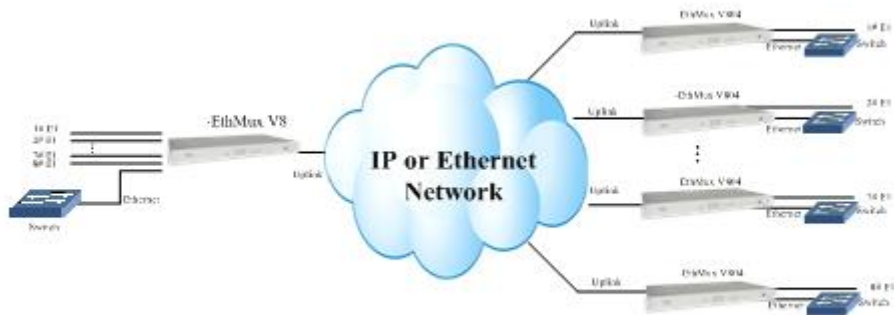
EthMux V8

E1 to Ethernet converter (TDM over IP), with 8-port E1 and 4-port 10/100Base-T interfaces for downlink, 1+1 ports 10/100Base-T interfaces for uplink, 75ohm/120ohm optional, DC-48V/AC220V optional

Application:



Point to Point Application



Point to Multipoint Application